



Equinox Square, London, E14 6GJ

£3,000 Per month



Equinox Square, London, E14 6GJ

£3,000 Per month

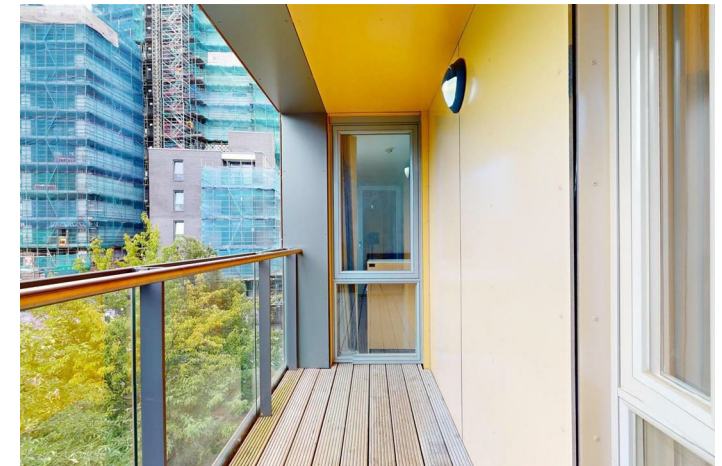
LONG LET - Large Three bedrooms

The apartment features a spacious reception room, perfect for entertaining guests or enjoying quiet evenings at home. With three well-appointed bedrooms, there is ample room for relaxation and privacy. The two bathrooms provide convenience and comfort, ensuring that morning routines run smoothly for all residents.

Equinox Square is known for its excellent amenities and proximity to local attractions, making it a desirable location for those who appreciate the best of city living. Whether you are looking to explore the cultural offerings of London or simply enjoy the convenience of nearby shops and restaurants, this apartment places you right in the midst of it all.

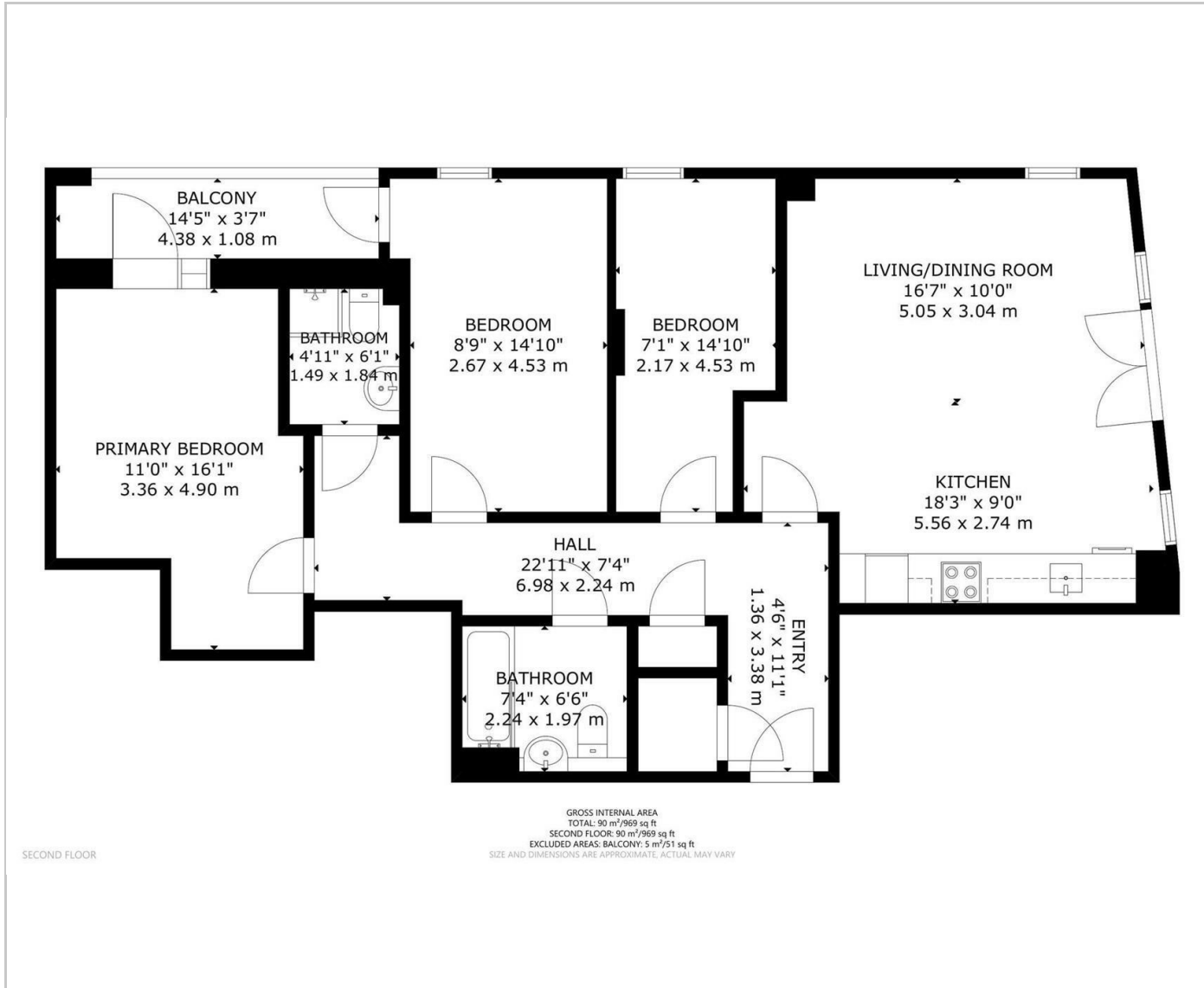
Key Features

- Three spacious double bedrooms
- Close to local amenities
- Spacious open plan reception room with dining area
- Excellent transport links

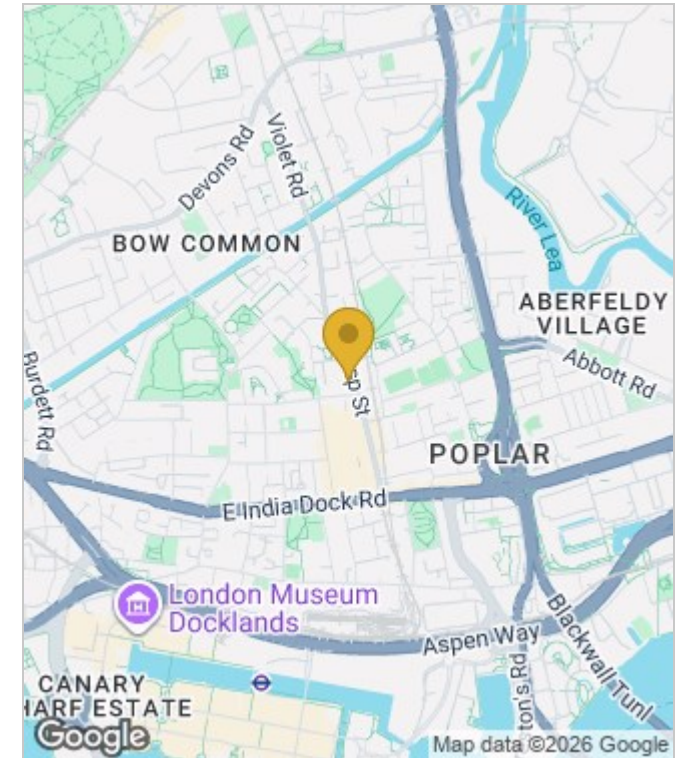


Council Tax Band: E

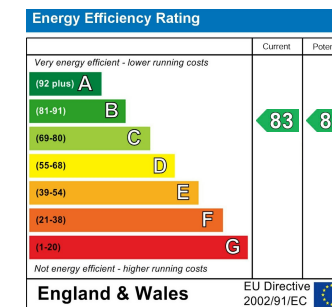
Floor Plans



Area Map



Energy Performance Graph



These particulars, whilst believed to be accurate are set out as a general outline only for guidance and do not constitute any part of an offer or contract. Intending purchasers should not rely on them as statements of representation of fact, but must satisfy themselves by inspection or otherwise as to their accuracy. No person in this firm's employment has the authority to make or give any representation or warranty in respect of the property.